

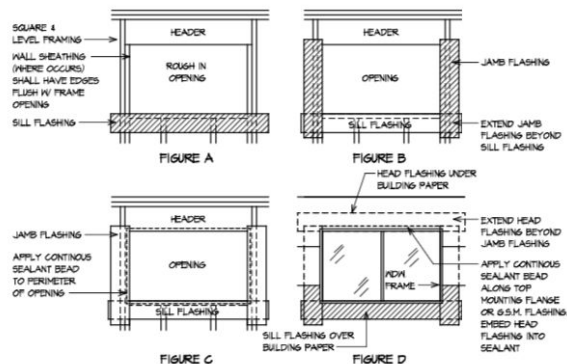
The background of the slide is a photograph of a modern building. The building features a curved, metallic facade with a grid-like pattern of panels. A large, curved glass window is visible, reflecting the sky and the building's structure. The sky is a clear, bright blue. The overall aesthetic is clean and architectural.

Small Firm Forum

**Architectural Detailing: Sharing What You
and Others Have Learned**



Deborah Lane



FLASHING OF EXTERIOR WALL OPENINGS

INDIVIDUALLY FLASH ALL EXTERIOR OPENINGS FOR FIXTURES SUCH AS WINDOWS, DOORS, AND VENTS TO MAKE THEM WATER TIGHT. PENETRATION FLASHING MATERIAL SHALL BE BARRIER COATED REINFORCED AND SHALL PROVIDE 4 HOUR MIN. PROTECTION FROM WATER PENETRATION WHEN TESTED IN ACCORDANCE WITH ASTM D-719. SEALANT MR. GRACE "VYCOR PLUS" OR EQUAL SHALL BE USED, OVER SOLID BACKING. FOR NAIL-ON-FLANGE TYPE FIXTURES A STRIP OF APPROVED FLASHING MATERIAL SHOULD BE AT LEAST 4" WIDE. FLASHING SHALL BE APPLIED IN A WEATHERBOARD FASHION AROUND THE FULL PERIMETER OF THE OPENING.

APPLY THE FIRST STRIP HORIZONTALLY IMMEDIATELY BELOW THE SILL, CUT IT SUFFICIENTLY LONG TO EXTEND PAST EACH SIDE OF THE WINDOW, SO THAT IT PROJECTS BEYOND THE VERTICAL FLASHING TO BE APPLIED LATER. FASTEN THE TOP EDGE OF THE SILL FLASHING TO THE FRAMING, BUT DO NOT FASTEN THE LOWER EDGE, SO THE WEATHER-RESISTIVE BARRIER APPLIED LATER MAY BE SLIPPED UP AND UNDERNEATH THE FLASHING IN WEATHERBOARD FASHION. (SEE FIGURE A)

NEXT, FASTEN STRIPS OF FLASHING AT EACH VERTICAL EDGE (JAMB) OF THE OPENING. RUN THIS FLASHING BEYOND THE SILL FLASHING AND ABOVE WHERE THE HEAD FLASHING WILL INTERSECT. (SEE FIGURE B)

APPLY A CONTINUOUS SEAL TO THE BACKSIDE (INTERIOR) OF THE MOUNTING FLANGE NEAR THE OUTER EDGE OR A CONTINUOUS SEAL TO THE PERIMETER OF THE OPENING AT A POINT TO ASSURE CONTACT WITH THE BACKSIDE (INTERIOR) OF THE MOUNTING FLANGE. (SEE FIGURE C)

FOR FIXTURES WITHOUT A NAIL-ON-FLANGE THE FLASHING SHALL BE 12" MIN. WIDE AND EXTEND INTO THE ROUGH FRAME AT THE SILL AND JAMB IN A WEATHERBOARD FASHION.

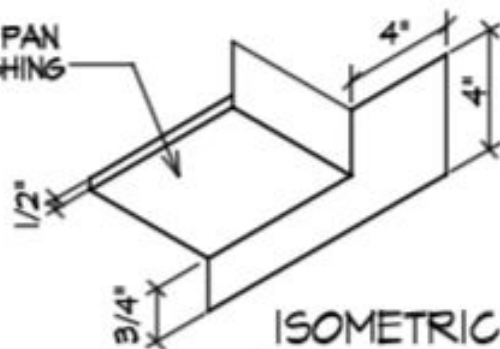
THE FIXTURE SHALL THEN BE INSTALLED.

NEXT, APPLY A CONTINUOUS SEAL AT THE TOP (HEAD) MOUNTING FLANGE OR 6.5M. HEAD FLASHING AND EMBED THE BOTTOM OF THE HEAD FLASHING OVER THE SEALANT AND THE MOUNTING FLANGE OR 6.5M. FLASHING. CUT THIS FLASHING SUFFICIENTLY LONG SO THAT IT WILL EXTEND BEYOND EACH JAMB FLASHING. FASTEN IN PLACE. (SEE FIGURE D)

APPLY REMAINING WEATHER-RESISTIVE BARRIER IN A WEATHERBOARD FASHION WITH THE SILL FLASHING LAPPING OVER THE TOP, AND THE HEAD AND JAMB FLASHING BELOW. BASED UPON INDUSTRY STANDARDS APPROVED BY THE CALIFORNIA ASSOCIATION OF WINDOW MANUFACTURERS (CAWM).

WINDOW NOTES: AT HEADS, JAMBS AND SILLS ALL FASTENERS ARE TO BE NAILED THROUGH FIN NO CLOSER THAN 8 INCHES AND WITHIN 10 INCHES FROM CORNERS. FASTENERS TO BE IN FACTORY DRILLED HOLES. NO NAILS SHALL BE BENT OVER THE NAILING FIN TO SECURE WINDOW.

GSM PAN
FLASHING



ISOMETRIC

(PARTIAL)

DOOR W/ INTERLOCKING
FLASHING

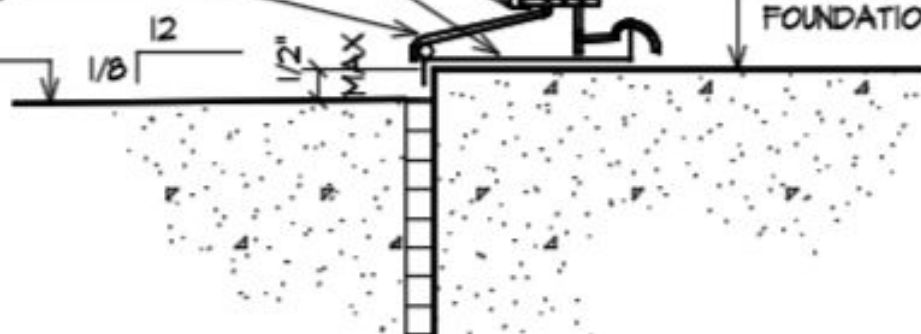
GSM PAN FLASHING
SET IN SEALANT

DOOR SILL

STOOP

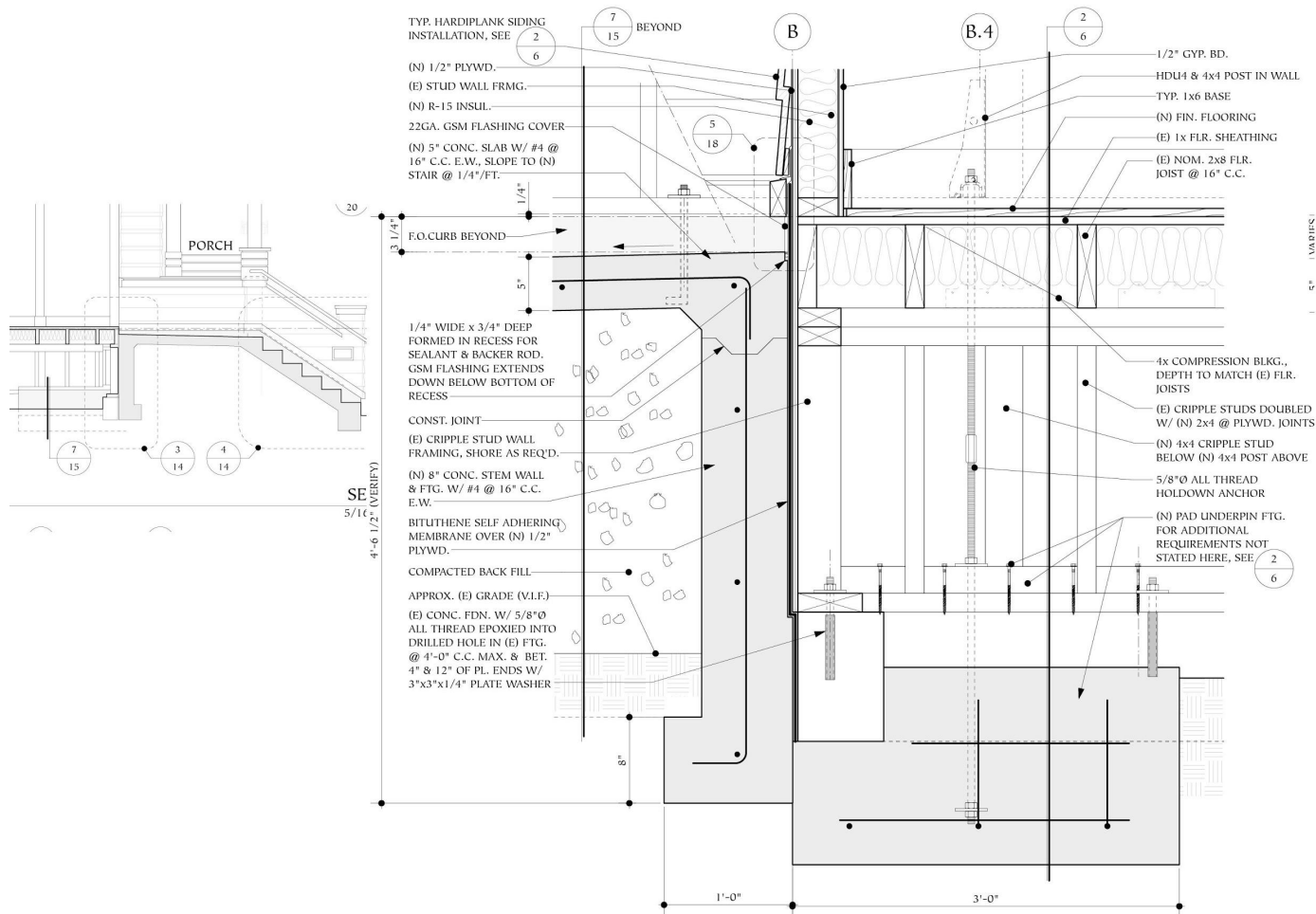
DOOR

CONC. SLAB
FOUNDATION



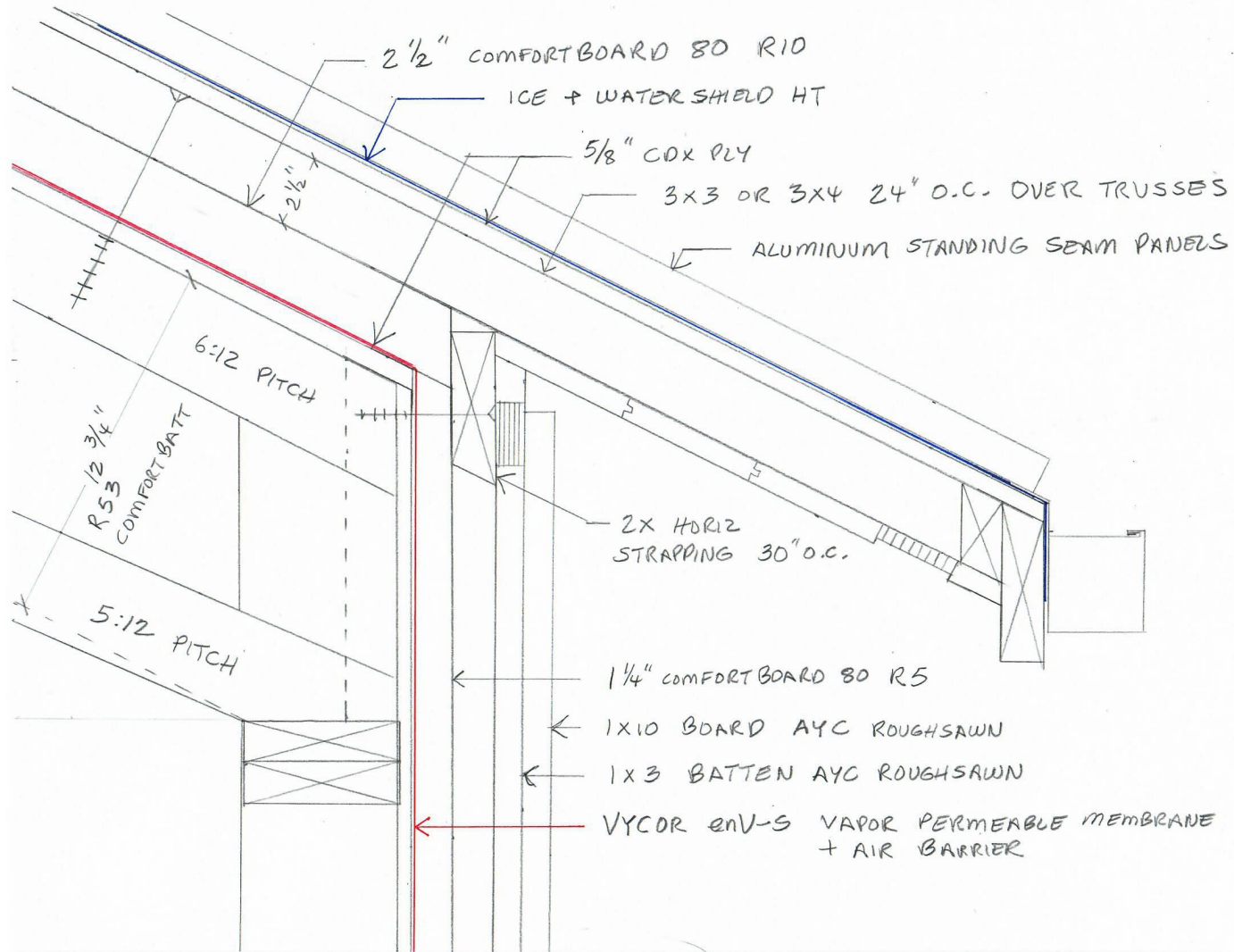
A low-angle, upward-looking photograph of a modern architectural structure. The building features a curved, metallic facade composed of large, rectangular panels. Below the main curved section, there is a glass-enclosed walkway or balcony with a curved railing. The sky is a clear, vibrant blue. The text "Donald Wardlaw" is overlaid in the center of the image.

Donald Wardlaw





Kerstin Hellmann



UNIT 1111 OR 1113

UNIT 1115

5/8" - TYPE "X" GYP WALL BOARD

MINERAL FIBER INSULATION

RCSD CHANNEL @ 24" O.C.

NOTE:

- PROVIDE FIRE STOPPING AS REQUIRED FOR 1HR. CONSTRUCTION
- SEAL JOINTS AND PENETRATIONS W/ THE APPLICABLE 1-HR. SEALANT SYSTEM
- PROVIDE 1 HR. FIRE RATED BACKER PUTTY FOR OUTLETS

GA FILE NO. WP 3240

1HR INTERIOR SOUND & FIRE RATED WALL DTL

1B

3" = 1'-0"



Linda Randolph





